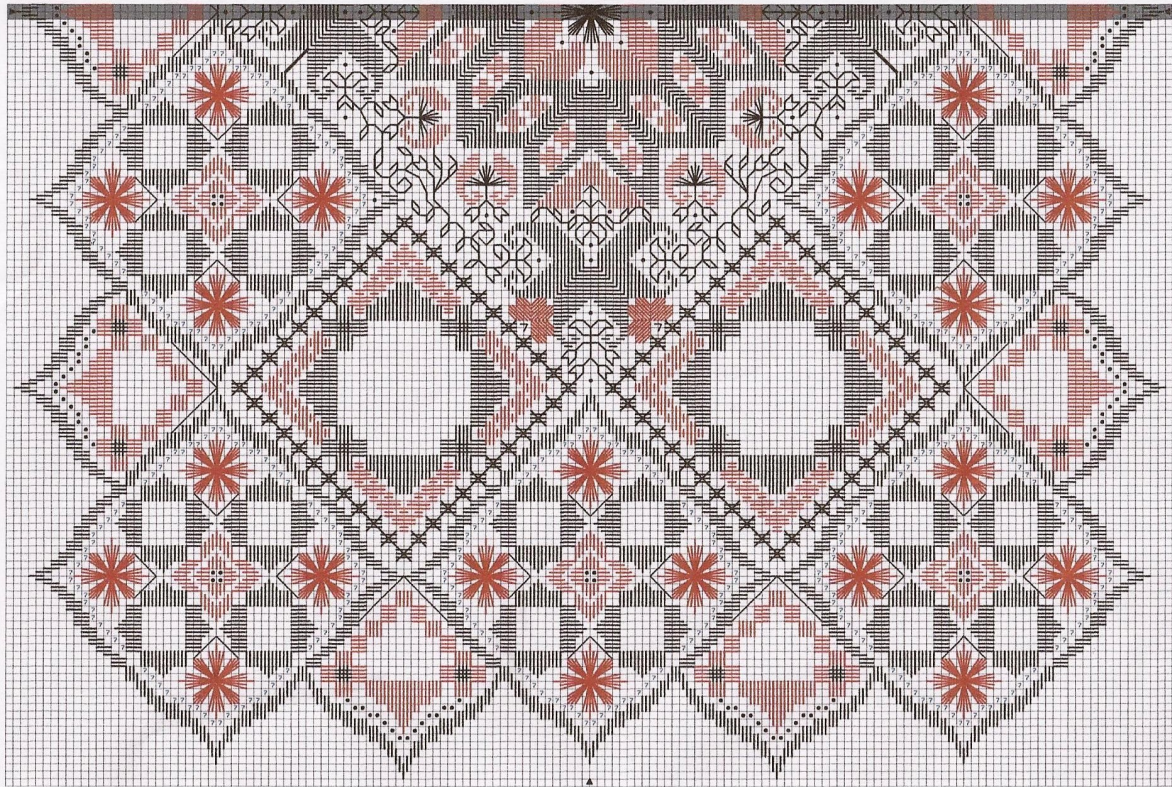


Gratitude



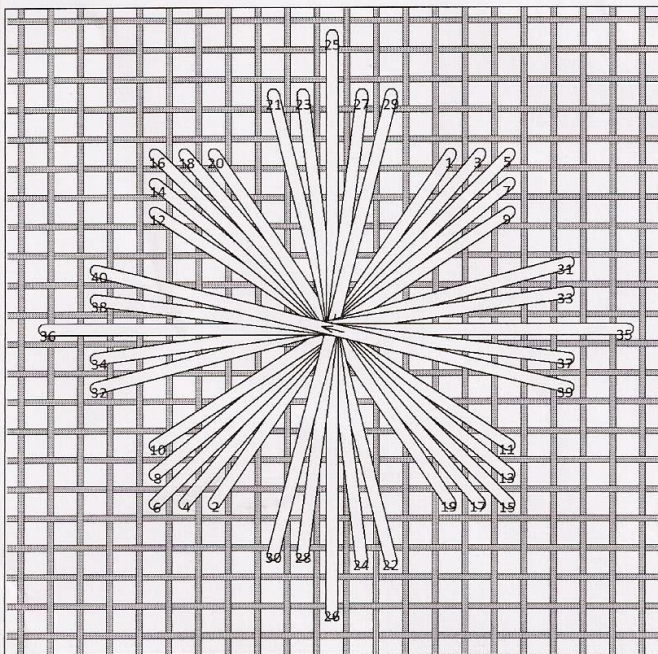
Design By: Judy Dixon

Copyright © Judy Dixon 2011

Gratitude

Working Instructions & Stitch Diagrams

For easy stitching begin this project in the centre and work toward the outer edge. Fold the fabric in half, then half again. Mark the centre with a needle or a simple Crossstitch in readiness to work the first centre motif.



Centre Crossover Stitch

Use two strands of-Pigeon

Follow the number sequence from the diagram on the left.

One in total

The diagram shows completed stitch.

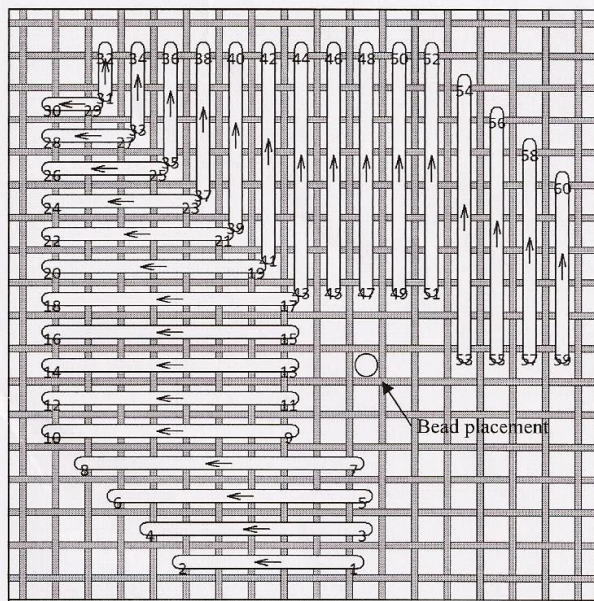
Second Flower Motifs

Use one strand of -Perle #8-762

Follow the number sequence from the diagram on the right.

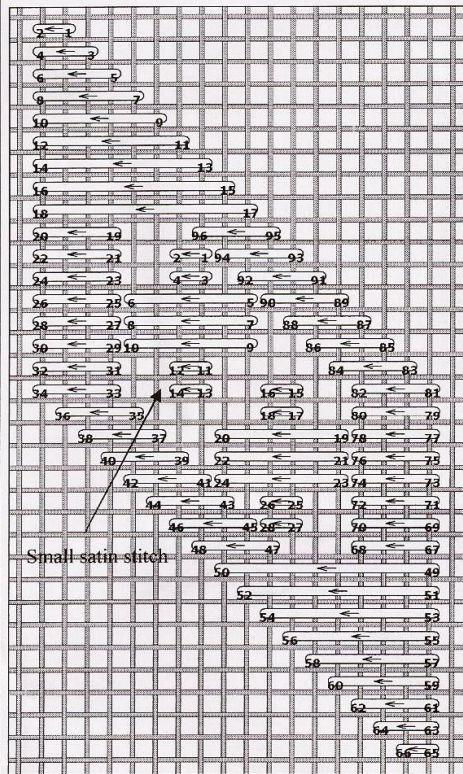
Four in total

The diagram shows completed stitch.



Gratitude

Working Instructions & Stitch Diagrams



Large Centre Flower Motif

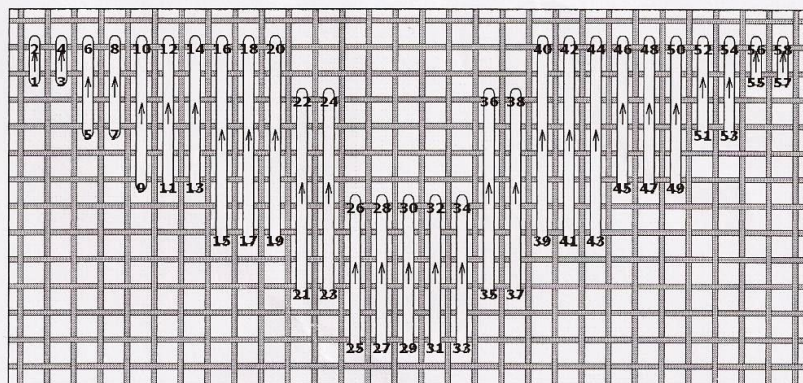
Use two strands of-Rose Quartz

This motif has sixteen parts. The diagram on the left shows the top left side. Work in a clockwise directions for easy stitching, counting carefully for each section.

Small Satin Stitch

Use two strands of-0403

Work two in each section, referring to the main graph for placement.



Upright Satin Stitch

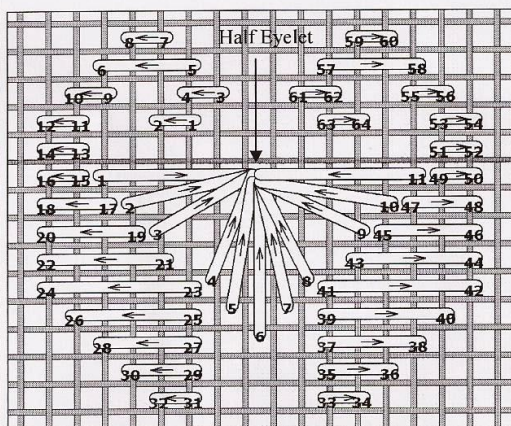
Use one strand of-Perle-762

The above diagram shows completed motif.

There are four in total. Refer to the main graph for stitch placement.

Gratitude

Working Instructions & Stitch Diagrams



Small Motifs

Use one strand of-Perle #8-762 for the motif.

Use two strands of-Pigeon for the half eyelets.

Both diagrams show completed stitch.

There are eight in total.

Refer to the main graph for stitch placement.

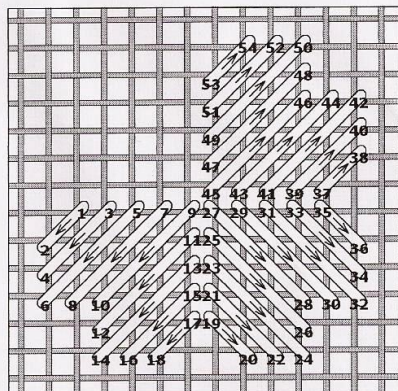
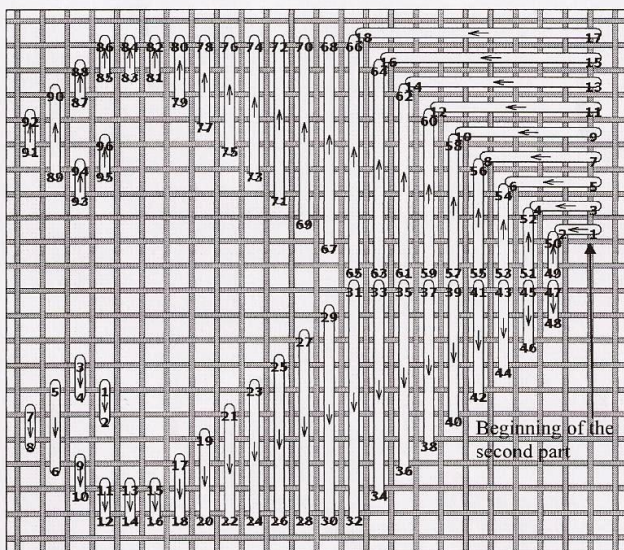
Large Motifs

Use two strands of-Taupe

This motif is worked in three parts. The diagram on the right shows the top left side.

There are four in total.

Refer to the main graph for stitch placement.



Corner Flower Motifs

Use two strands of-Rose Quartz

This motif is worked in three parts. The diagram on the left shows the top left side.

There are four in total—(top and bottom of the centre).

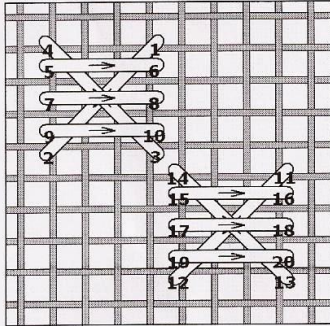
Refer to the main graph for stitch placement.

Gratitude

Working Instructions & Stitch Diagrams

The next step is to work the backstitch vines around the centre motifs.

Use one strand of-Ollalieberry.

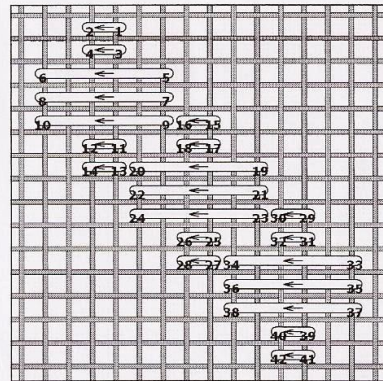


Satin Cross

Use two strands of-0403

I worked in a clockwise direction to ensure correct placement for the remaining stitches and motifs.

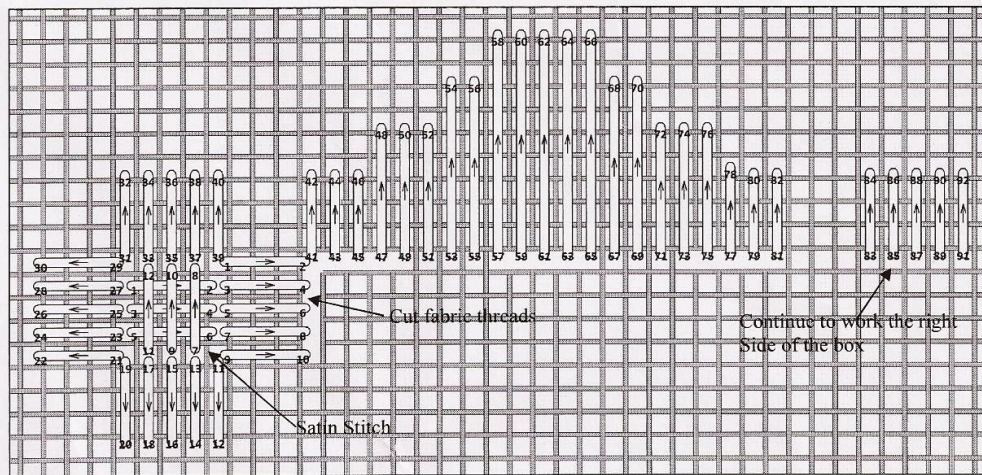
Work the diamond shape in satin cross first, completing one section at a time. There are four diamond shapes in total.



Satin Stitch (Around the hardanger box)

Use two strands of-Pigeon

The diagram on the right shows completed stitch. Refer to the main graph for placement



Hardanger Box

Use one strand of-Perle #8-3033

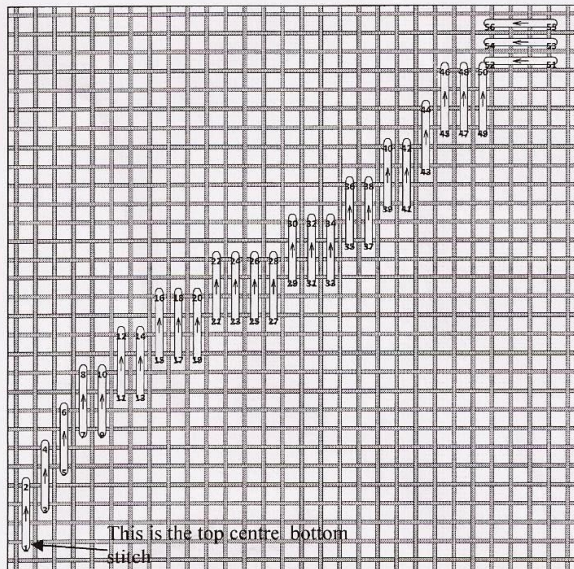
The above diagram shows the top of the box. The deleted areas show the four cut fabric threads.

Use two strands of-Ollalieberry to work the satin stitch to the centre of the kloster square (four to each section).

Do not cut the hardanger sections until all stitching is completed. There are four areas to work.

Gratitude

Working Instructions & Stitch Diagrams



Outline Satin Stitch (Large)

Use two strands of-1203

There are ten of these areas worked in four parts to form a diamond shape. The diagram on the right begins with the top centre (bottom) stitch, refer to main graph to ensure correct placement and less counting. Once you have the first satin stitch outline, the remaining areas will be easier to follow.

Now follow the centre stitch diagram from page 1 to work the four cross over stitches, using one strand of-Perle #8-762.

Small Hardanger Boxes

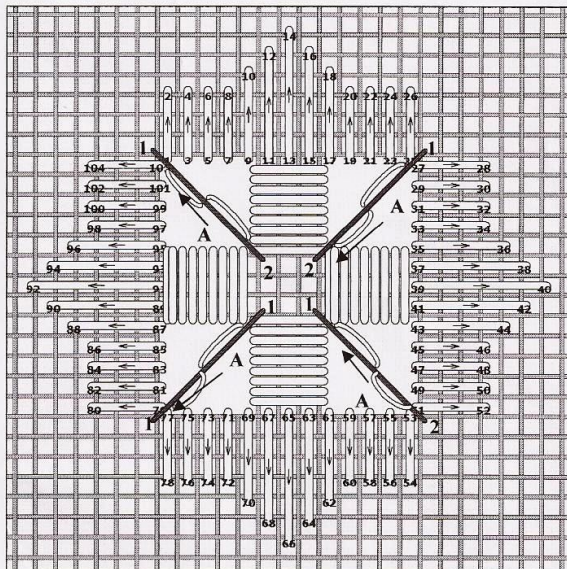
Use one strand of-Perle #8-3033

There are four boxes to each section, all worked the same way.

The diagram on the right shows completed diagram.

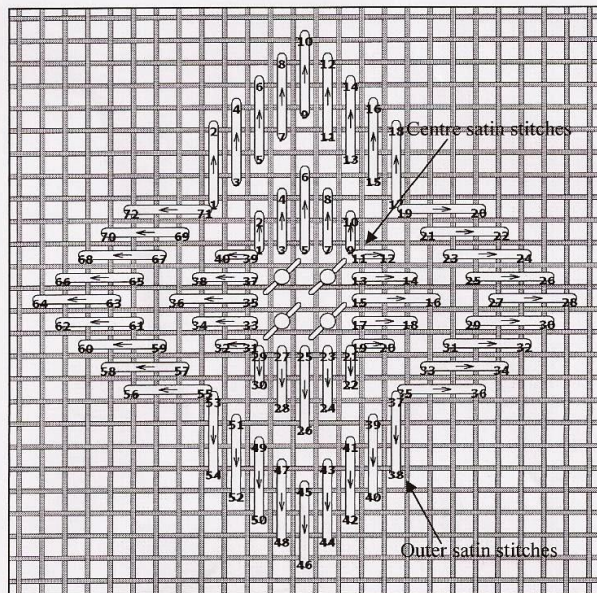
Use one strand of-Perle #12-3033 to wrap the bars, and to create the four corner spokes.

Create four spokes in each corner by bringing the needle to the front at 1, going down at 2. Bring the needle to the front via the open space (A), and work the thread over and under the spoke twice (towards 1) then go through to the back at 1.



Gratitude

Working Instructions & Stitch Diagrams



Centre Satin Stitch Diamond

Use two strands of-Pigeon to work the outer satin stitch.

Use two strands of-Taupe to work the small centre satin stitches.

The diagram on the left shows completed motifs.

Use one strand of -Pigeon to work the four areas of backstitch between the hardanger boxes.

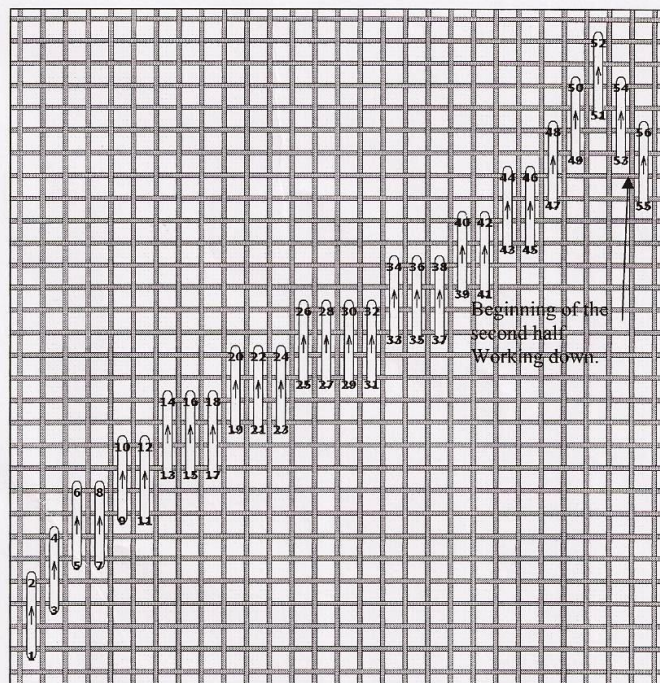
Apart from the cutting areas and beads this now completes all stitch diagrams for these ten areas.

Small Outer Half Diamond Areas

Use two strands of-Rose Quartz

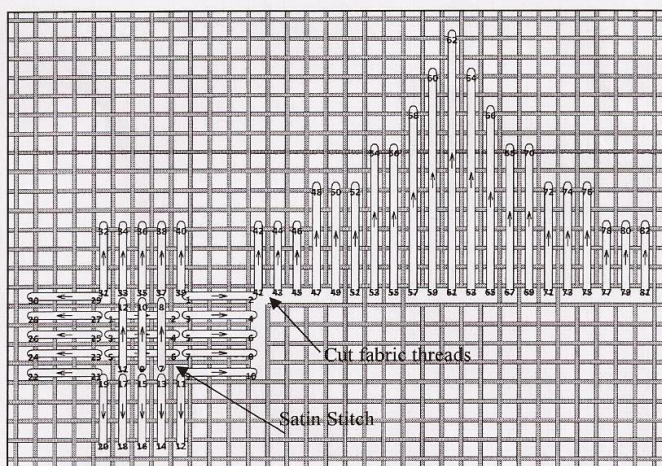
The diagram on the right shows half of the diamond shape.

There are ten areas to work.



Gratitude

Working Instructions & Stitch Diagrams



Outer Hardanger Areas

Use one strand of-Perle #8-3033 to work the hardanger area.

Use two strands of-Ollalieberry to work the satin stitches in the centre of the two Kloster Blocks.

The diagram on the left shows part only. The blank areas show which fabric threads to cut. Always cut when all the stitching has been completed.

Use one strand of-Ollalieberry to work the backstitch.

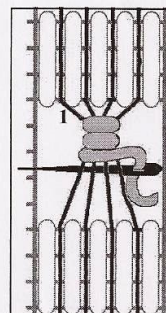
There are ten out areas in total

Wrapped Bars

Use one strand of-Perle #12-3033

Use the same thread to work the wrapped bars and spokes

Secure the working thread at the back then bring the needle to the front at 1. Work under and over from right to left (as per diagram on the right), until you reach the end of the bar. Take the needle under the wrapped bar you have just completed, and bring the needle to the front again at 1 to begin wrapping the new bar.



Attaching The Beads

A black diagonal line represents the placement guide for the four oval pearls.

Attach the beads using two strands of ordinary cream sewing thread. When attaching the pearls go through the hole twice. This helps keep the pearls in place. Try not to travel too far across the back of your work as in time the beads will loosen. I usually like to work a small backstitch after attaching 5-6 beads, which helps keep the beads firmly in place.

This now completes all instructions for 'Gratitude' - Well done!



Gratitude

| Supplies | Number | Colour | Alternative Threads |
|---|--------------------|------------------------|----------------------|
| DMC Perle | #8—3033 | Medium Beige | None |
| DMC Perle | #12—3033 | Medium Beige | None |
| Gloriana Silk | #105 | Taupe | None |
| Gloriana Silk | #140 | Pigeon | None |
| Gloriana Silk | #153 | Ollalieberry | None |
| Caron Waterlillies | None | Rose Quartz | None |
| Kreinik Silk Mori | #1203 | Medium Pink | DMC Thread-224 |
| Kreinik Silk Mori | #0403 | Pale Green | DMC Thread-524 |
| DMC Perle | #8- 762 | Very Pale Blue | None |
| Mill Hill Beads | 03021 (• = Symbol) | Pale Cream | None |
| Mill Hill Beads | 02081 (7 = Symbol) | Rainbow Mauve | None |
| Oval pearls | None | Cream | None |
| Jobelan Fabric Design size =12 x14 ins | 28 count | Ivory Or Antique White | Any evenweave fabric |

Notes

Every square on the main graph = two fabric threads. Note the change in scale on the stitch diagrams—every graph line = one fabric thread. Refer to the main graph for stitch placement, then follow the stitch diagrams to work stitches and motifs. I always use a frame; This helps keep an even tension when working the special stitches.

Always check to make sure that everything lines up with already worked stitches and motifs.

I strive to present this design error free; however, human error can occur. If you have any comments you can email me on judy.dixon@yahoo.co.uk

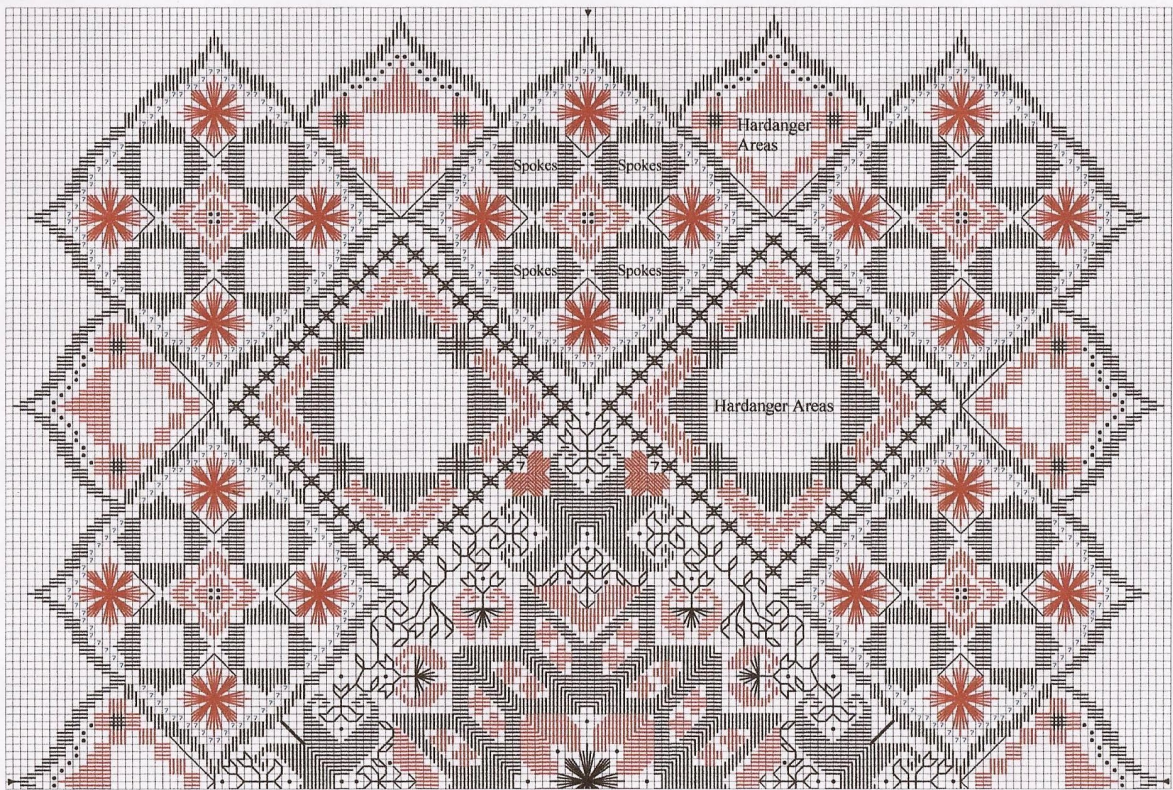
The two shaded rows on page 2 of the graph are repeated rows from page 1.

This design has been prepared by Judy Dixon. Any persons reproducing this design in any form complete or part there of must seek permission from Judy Dixon or they will be infringing copyright.

The worked model was designed and stitched by Judy Dixon



Gratitude



Design By: Judy Dixon

Copyright © Judy Dixon 2011